



I-494 Auxiliary Lane & Rehabilitation Project Information and Noise Barriers

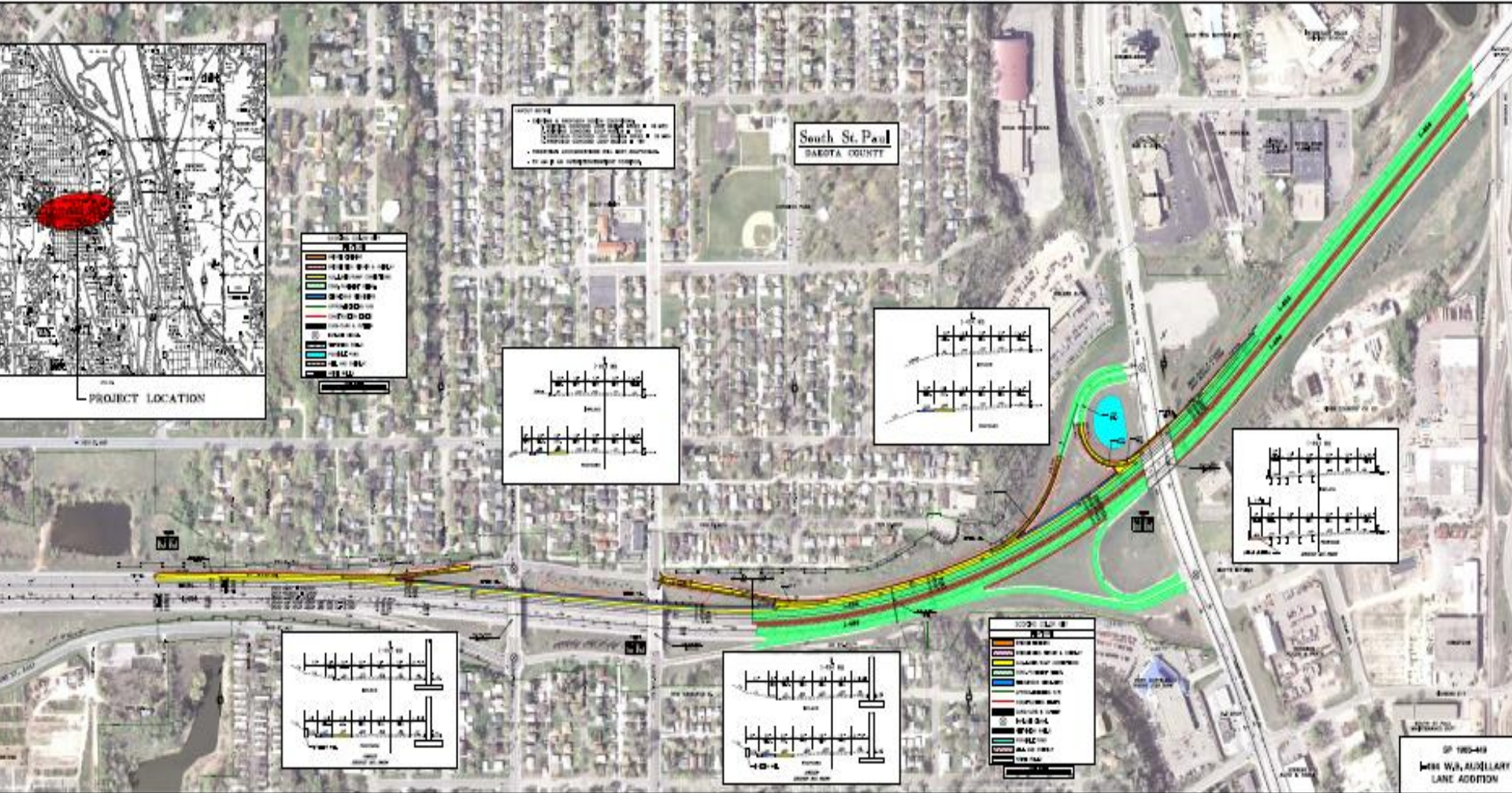
Presentation for South St. Paul City Council Work
Session

Monday, September 12, 2016

We all have a stake in **A**  **B**



Project Information



Project Information

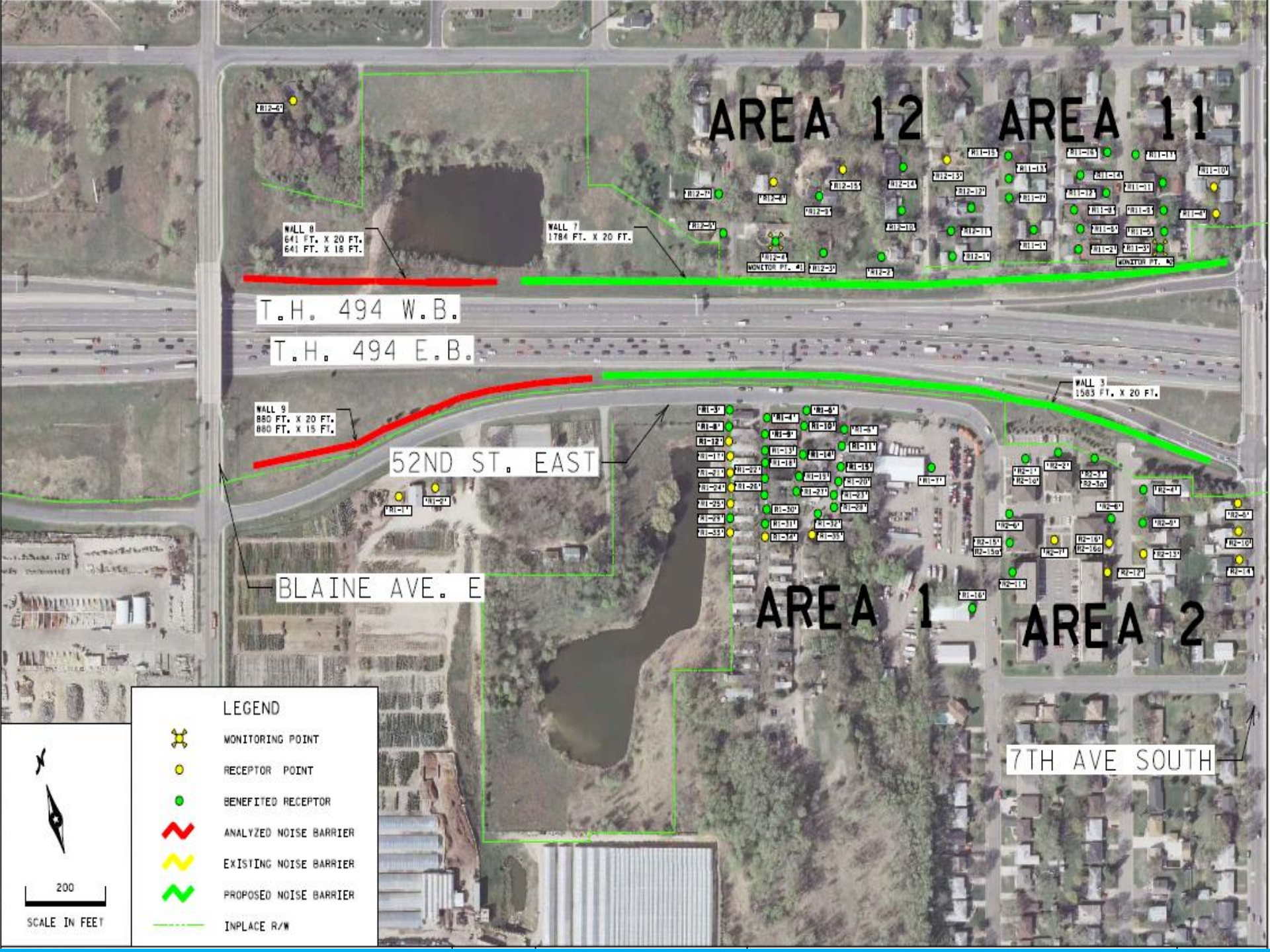
- ▶ Construct auxiliary lane to reduce congestion
- ▶ Replace and repair storm sewer trunk line to ensure adequate drainage capacity and constructing ponds
- ▶ Construct noise walls to meet standards
- ▶ Scheduled for construction in 2018



MnDOT Noise Process Video

- ▶ <https://www.youtube.com/watch?v=b9Cl6BYE6qg>





AREA 12 AREA 11

T.H. 494 W.B.

T.H. 494 E.B.

52ND ST. EAST

BLAINE AVE. E

AREA 1 AREA 2

7TH AVE SOUTH

LEGEND

-  MONITORING POINT
-  RECEPTOR POINT
-  BENEFITED RECEPTOR
-  ANALYZED NOISE BARRIER
-  EXISTING NOISE BARRIER
-  PROPOSED NOISE BARRIER
-  INPLACE R/W



WALL 6
641 FT. X 20 FT.
641 FT. X 18 FT.

WALL 7
1784 FT. X 20 FT.

WALL 9
880 FT. X 20 FT.
880 FT. X 15 FT.

WALL 3
1583 FT. X 20 FT.

MONITOR PT. 41

MONITOR PT. 42

- RI-1
- RI-2
- RI-3
- RI-4
- RI-5
- RI-6
- RI-7
- RI-8
- RI-9
- RI-10
- RI-11
- RI-12
- RI-13
- RI-14
- RI-15
- RI-16
- RI-17
- RI-18
- RI-19
- RI-20
- RI-21
- RI-22
- RI-23
- RI-24
- RI-25
- RI-26
- RI-27
- RI-28
- RI-29
- RI-30
- RI-31
- RI-32
- RI-33
- RI-34
- RI-35
- RI-36
- RI-37
- RI-38
- RI-39
- RI-40
- RI-41
- RI-42
- RI-43
- RI-44
- RI-45
- RI-46
- RI-47
- RI-48
- RI-49
- RI-50
- RI-51
- RI-52
- RI-53
- RI-54
- RI-55
- RI-56
- RI-57
- RI-58
- RI-59
- RI-60
- RI-61
- RI-62
- RI-63
- RI-64
- RI-65
- RI-66
- RI-67
- RI-68
- RI-69
- RI-70
- RI-71
- RI-72
- RI-73
- RI-74
- RI-75
- RI-76
- RI-77
- RI-78
- RI-79
- RI-80
- RI-81
- RI-82
- RI-83
- RI-84
- RI-85
- RI-86
- RI-87
- RI-88
- RI-89
- RI-90
- RI-91
- RI-92
- RI-93
- RI-94
- RI-95
- RI-96
- RI-97
- RI-98
- RI-99
- RI-100

AREA 9

PARK ST. WEST

AREA 10

MONITOR PT. A3
MONITOR PT. A4

WALL 6A
238 FT. X 20 FT.
116 FT. X 20 FT.
87 FT. X 20 FT.

WALL 6
554 FT. X 20 FT.
554 FT. X 18 FT.

WALL 4
525 FT. X 20 FT.
525 FT. X 18 FT.

WALL 4A
234 FT. X 20 FT.
113 FT. X 20 FT.
102 FT. X 20 FT.

EXISTING WALL 1 TO BE REMOVED
1097 FT. X 13 FT.

WALL 3A
1717 FT. X 20 FT.

WALL 5
870 FT. X 20 FT.
870 FT. X 18 FT.

WALL 2
329 FT. X 8 FT.

T.H. 494 W.B.

T.H. 494 E.B.

AREA 3








AREA 4

AREA 5

AREA 6

5TH AVE SOUTH

LEGEND

-  MONITORING POINT
-  RECEPTOR POINT
-  BENEFITED RECEPTOR
-  ANALYZED NOISE BARRIER
-  EXISTING NOISE BARRIER
-  PROPOSED NOISE BARRIER
-  INPLACE R/W



200
SCALE IN FEET

Next Steps

- ▶ Mid to late Sept 2016 – mail noise ballots to benefitted receptors
- ▶ Late Sept/Early Oct 2016 – hold meeting for benefited owners/residents
- ▶ Mid to late Oct 2016– end of voting comment period
- ▶ Dec 2016 – Publish results of noise voting in Categorical Exclusion document



Questions?

Mohammad Dehdashti, P.E.

MnDOT Metro Project Manger / Design Engineer

651-234-7606

mohammad.dehdashti@state.mn.us

Tara McBride, P.E.

MnDOT Metro Project Business Liaison / South Area Engineer

651-234-7724

Tara.Mcbride@state.mn.us

Natalie Ries

MnDOT Metro Noise/Air Quality Supervisor

651-234-7681

Natalie.Ries@state.mn.us

