

Potential South St. Paul Library Programming Study

Jerome (Jay) Biedny, Capital Projects Manager
Facilities Management, Physical Development Division

GGP Committee Meeting
17 November 2020

Overview



Efficient, Effective, Responsive

- Background
- Programming Study and Costs
- Schedule
- Requested Action
- Questions

Background



Efficient, Effective, Responsive

- **The City of South St. Paul (SSP) has operated its own Library since 1922. The original building dates to 1927.**
- **Although separate from the County Library system, SSP library has shared programming and technologies with the County system.**
- **The population in and around SSP uses its city library and several County libraries interchangeably.**
- **SSP has proposed joining the County Library System, and requested that the County construct a new library facility there.**
- **The City has offered to provide a site near the intersection of 7th & Marie Avenues AND would also like to explore reusing their existing 1927 library building on the existing city site with a replacement of its 1969 addition.**
- **Both site options would come at no cost to the County.**

Programming Study and Costs



Efficient, Effective, Responsive

If the County Board advances the basic concept of the project, a Programming Study is recommended as a first step. The Study would:

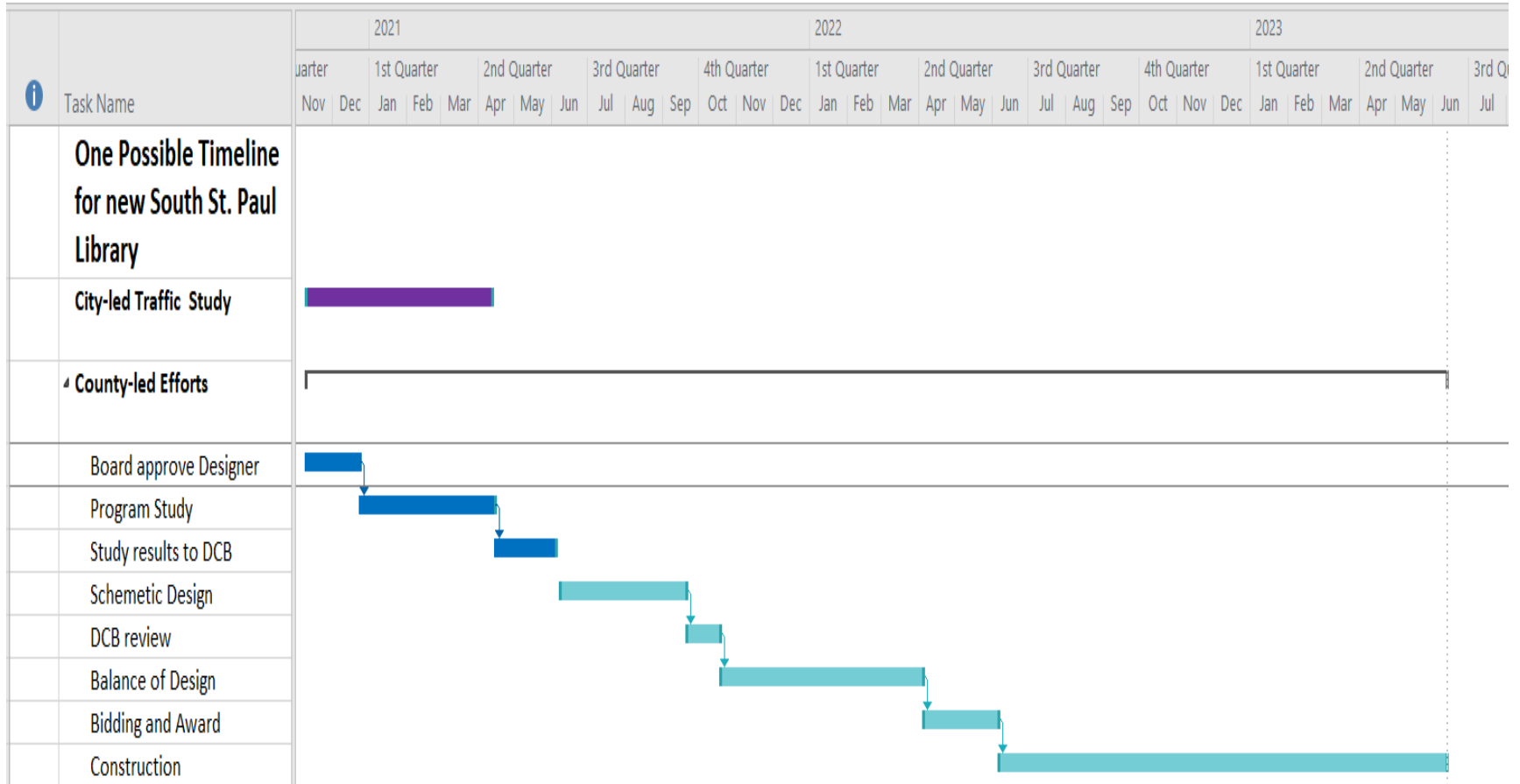
- **capture the space needs for the building in the context of the community and adjacent library facilities.**
- **Include construction cost estimates for each site.**
- **Become the basis for possible further City discussions on a scope and final selection of one of the two sites.**
- **Establish the basis on which to select the final design team.**

The guidepost for the study will be a total maximum County project expenditure of \$6 million.

Schedule



Efficient, Effective, Responsive



Requested Actions #1



Efficient, Effective, Responsive

Approve up to \$65,000 of county-wide Budget Incentive Program (BIP) funds to secure a design team and complete a Programming Study for the possible creation of a new County library on land provided by the City of South St. Paul at either a new site near Marie & 7th Avenues or the existing library site.

Requested Actions #2



Efficient, Effective, Responsive

Approve the execution of a Joint Powers Agreement (JPA) with the City of South St. Paul (SSP) to accept \$15,000 from the City as a contribution to the Programming Study costs to cover the expense of programming a second site, that of the existing building.

Questions?